

2024 VOYAGES

*Small islands of*

**JAPAN**

**& THE PHILIPPINES**



- > Journey to Japan - 14 Nights - Yap to Tokyo
- > Through the Heart of Japan - 14 Nights - Tokyo to Fukuoka
- > Through Japan's Ryukyu Islands - 16 Nights - Fukuoka to Keelung
- > Island Trails of the Philippines - 16 Nights - Keelung to Manila



**coralexpeditions**  
AUSTRALIA'S PIONEERING CRUISE LINE

# JAPAN

## AND THE

# PHILIPPINES



Join us on our inaugural expeditions to the small islands of Japan and the Philippines. Cast off from Yap and trace history as we explore sites that lie in the wake of war, from Tinian and Torishima to Iwo Shima.



Sail to the small islands of the Japanese Ryukyu, Ogasawara and Izu archipelagos, most of which remain untouched by Western travellers. Discover remote island life at traditional fishing villages and experience authentic encounters with local people, culture and nature. This is the Japan that most visitors have not seen.

With an expert expedition team and warm Australian hospitality, there is no better way to experience these remote places than by small ship.

## Voyage Series

### > [Journey to Japan](#)

Yap to Tokyo | 14 Nights | September 2024

### > [Through the Heart of Japan](#)

Tokyo to Fukuoka | 14 Nights | September 2024

### > [Through Japan's Ryukyu Islands](#)

Fukuoka to Keelung | 16 Nights | October 2024

### > [Island Trails of the Philippines](#)

Keelung to Manila | 16 Nights | October 2024

## ADJOINING ITINERARIES

### > [West Papua, Raja Ampat & Micronesia](#)

Darwin to Yap | 16 Nights | August 2024

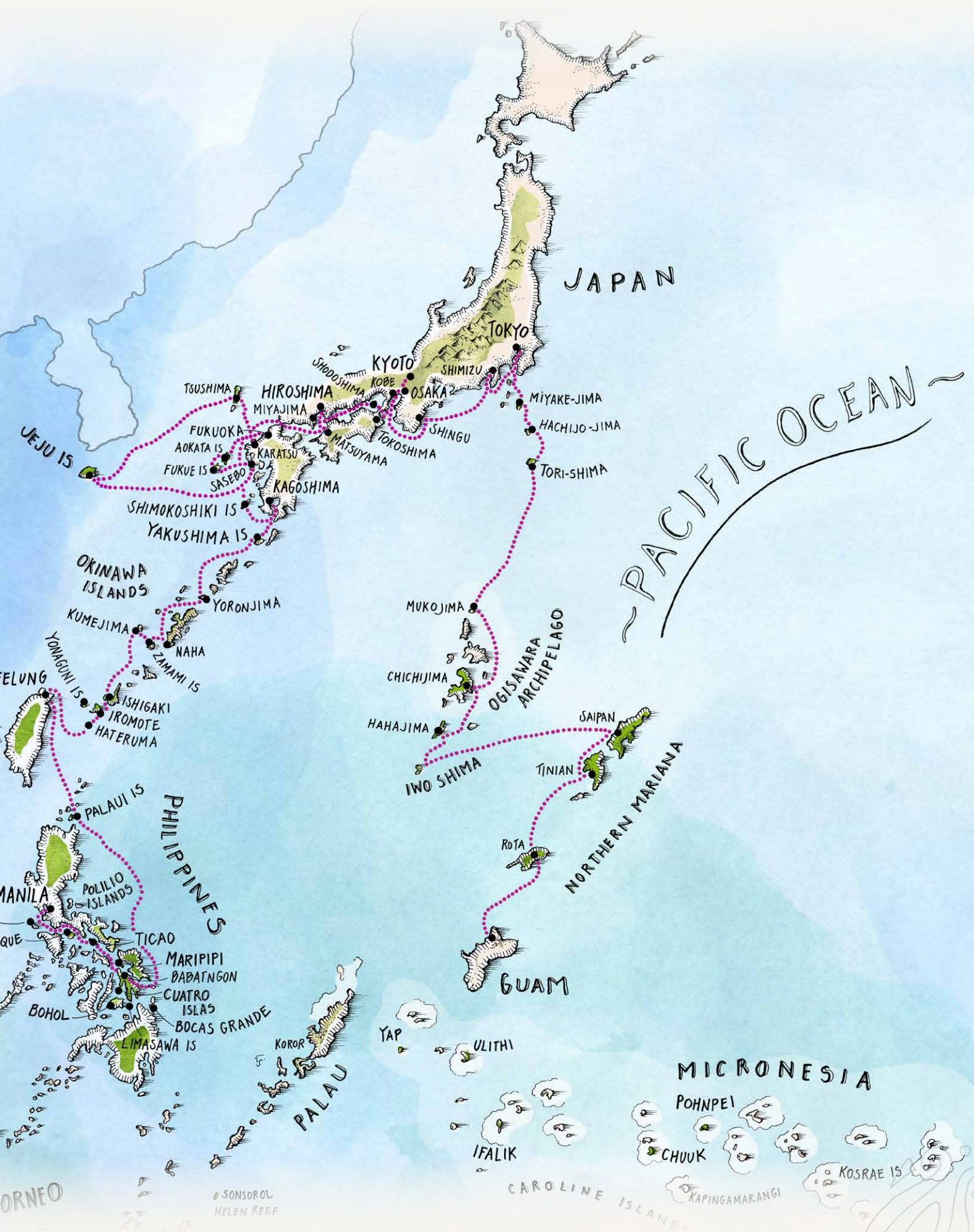
### > [Through the Islands & Atolls of Micronesia](#)

Manila to Kavieng | 25 Nights | November 2023



## ADJOINING VOYAGE SAVINGS

Join us on multiple voyages in the series and you will enjoy the benefits our Xplorers Club along with a further 10% adjoining cruise saving.



# JOURNEY TO JAPAN

YAP > TOKYO

14 NIGHTS | 6 SEPTEMBER 2024

①

## Expedition Highlights

- > Snorkel on coral reef gardens and stroll the idyllic beaches of a truly deserted islet in a remote part of the world at Ulithi Atoll.
- > Cross over Challenger Deep - the oceans deepest trench on Earth and participate in a special event.
- > Enjoy relaxing days at sea with onboard wellness activities, lectures, workshops and tastings.
- > Visit Shimizu, one of Japan's most scenic ports with unparalleled views of Mt. Fuji and explore the Taisha Shrine in the foothills of Mt. Fuji.
- > Walk to the top of Mount Mihara, an active volcano with several moderate nature walk routes to the crater.
- > Be immersed in local culture with a Kashitate dance and Hachijo Taiko drum performance at Hachijojima.
- > Visit the colossal copper statue of Amida-butsu (the Great Buddha) constructed over 750 years ago, has been designated a National Treasure by the Japanese government.

See Page 15 for Departures & Fares



②



③



④



Yokohama  
Shimizu  
Oshima  
Tokyo  
Miyakejima  
Hachijojima

Iwo Shima

Ulithi  
Yap  
Challenger Deep  
Fais  
Sorol

## ITINERARY: 14 NIGHTS > YAP TO TOKYO

### DAY 1: DEPART YAP

Board *Coral Geographer* at Yap at 4:00pm for a 7:00pm departure. Settle into your cabin and relax as we set sail across the Pacific Ocean. This evening, join the Captain's welcome drinks and meet your crew and fellow guests as the sun sets.

### DAYS 2-14:

*These are expedition itineraries covering remote regions. Your Captain and Expedition Team may make changes to the daily schedule when necessary to maximise guest experience. Below are the highlight destinations of your voyage.*

#### ULITHI ATOLL, FEDERATED STATES OF MICRONESIA

Snorkel on coral reef gardens off a truly deserted islet in a remote part of the world. Enjoy the tropical vista of white sand beaches, colourful coral reefs home to sea turtles, coconut crabs and sea birds. There is also opportunity to visit the Ulithi Turtle Project and the vibrant community village. Gather in front of the Men's Meeting house where the captain will meet with the High Chief to thank him and the village community for welcoming us on Mogmog Island. Adhering to all customary traditions, walk about the village to visit and photograph the traditional buildings and sites. Local guides will give informative talks on the traditions and customs and social structures of Mogmog Island. Stroll through the village market with demonstrations of traditional woven baskets and purses, as well handwoven lava-lava, loom weaving demonstrations and other wooden handicrafts.

#### SOROL ATOLL, FEDERATED STATES OF MICRONESIA

Sorol is a remote and rarely visited coral atoll, located 122 nautical miles south of Ulithi. Our visit to the atoll's small community will be a first for expedition cruising.

#### FAIS ISLAND, FEDERATED STATES OF MICRONESIA

Our last coral atoll exploration in Micronesia before our Journey to Japan begins. Learn of the World War II history.

#### CHALLENGER DEEP, FEDERATED STATES OF MICRONESIA

A special event at the ocean's deepest trench on Earth will be experienced by all guests. We will each sign a commemorative scroll, which is then placed into a steel pipe, sealed, and drop to the bottom of the ocean. If conditions permit, enjoy an ocean swim.

#### DAY AT SEA: IWO SHIMA, JAPAN

Today we circumnavigate the volcanic island of Iwo Jima where the World War II Battle of Iwo Jima took place along with the site of Associated Press photographer Joe Rosenthal's famous photo *Raising the Flag* which was photographed on Mt. Suribachi. The famous photograph won the 1945 Pulitzer Prize - the only time an image has won the prize the year it was captured. Your onboard team will share the story of WWII devastation and battles in this area in 1945.

#### SHIMIZU, JAPAN

Shimizu, translating to 'pure water' in Japanese is one of Japan's most scenic ports with unparalleled views of Mt. Fuji. This is our entry port into Japan. From here we will visit the Mt. Fuji World Heritage Centre, constructed to commemorate the mountain's designation as a UNESCO World Heritage Site. The centre boasts a viewing deck and a variety of exhibitions pertaining to the volcano's seismology, history, and cultural significance. The building has an inverted conical form that reflects in the pond outside to reveal the shape of the iconic mountain.

We will also enjoy a scenic view as we take a cable car ride to Kunozan Toshogu Shrine. The shrine has a history of over 400 years, and enshrines Lord Tokugawa Ieyasu, who founded the

Tokugawa Shogunate in 1603 that brought peace to Japan for 265 years. The beautifully decorated shrine buildings were designated as a National Treasure in 2010.

#### OSHIMA, JAPAN

Today we walk to the top of Mount Mihara, an active volcano with major eruptions occurring at intervals of 100-150 years. Mount Mihara has featured in several Japanese pop culture movies including *The Return of Godzilla*. This nature walk is moderate with several routes to the crater, where you can spot small fumes coming out. Tables and seats are along the way and amenities at the top. Enjoy the views to and from the volcano, including Mount Fuji which can be seen in the distance.

#### HACHIJOJIMA, JAPAN

On Hachijojima Island see the landscape changed by volcanic eruptions and enjoy hot springs and waterfalls within moss draped forests with blooming hydrangeas, aloe, and freesia. Hikes with unbeatable views are on offer here where you can observe the unique nature and grazing cows. At the Hattori Residence be immersed in local culture with a Kashitate dance and Hachijo Taiko drum performance, learn about kimono traditions and wander the ancient stone-walled laneways of this historical site.

#### MIYAKEJIMA, JAPAN

The coast of Miyakejima is largely formed by lava cooling which has created interesting geo-spots over time. Megane Rock (spectacle rock) is one such result, formed by two enormous arches lined together which have eroded over time to create a formation resembling a pair of spectacles. This unique volcanic landscape is home to flora and fauna that thrive in this challenging terrain. The island is famous for its bird watching opportunities with sightings of the Izu Island thrush - a designated natural treasure. Walk along the volcanic trails and explore the landscape while encountering wildlife at this extraordinary destination.

#### YOKOHAMA, JAPAN

Visit the colossal copper statue of Amida-butsu (Amitabha Buddha) commonly known as Kamakura Daibutsu (Great Buddha of Kamakura) at Kotoku-in Temple. The Great Buddha, constructed over 750 years ago, has been designated a National Treasure by the Japanese government, and is some 11.3 meters tall and weighs approximately 121 tons.

Walk to the Hase Temple (Hasedera), an attractive temple with views over Kamakura, famous for its eleven-headed statue of Kannon, the goddess of mercy. The 9.18 meter tall, gilded wooden statue is regarded as one of the largest wooden sculptures in Japan and can be viewed in the temple's main building, the Kannon-do Hall. After lunch in local restaurant, enjoy free time absorbing the sights of Komachi Street (Komachi-dori), a strip of modernity in the centre of an ancient city, where trendy boutiques, gourmet cuisine, and a timeless ambience rub shoulders.

#### DAY 16: ARRIVE TOKYO, JAPAN

Our voyage ends in the Japanese capital of Tokyo. Disembark *Coral Geographer* at 8:30am and bid farewell to new-found friends, the Master and crew.

# THROUGH THE HEART OF JAPAN

TOKYO > FUKUOKA

14 NIGHTS | 21 SEPTEMBER 2024



## Expedition Highlights

- > Visit Arita, Japan's most prodigious exporter of fine porcelain in the 17th century.
- > View the iconic red torii gate of the Itsukujima Shinto shrine 'floating' in the Seto Inland Sea and visit neighbouring cultural sites to witness centuries-old customs.
- > Uncover World War II histories including on a visit Hiroshima's Peace Memorial Park.
- > Visit Osaka, the food capital of Japan, or the historic city of Kyoto where traditional and modern architecture collide.
- > Explore UNESCO-listed Global Geopark Manjanggul, a 7.4km long lava tube and cave of South Korea's Jeju Island.
- > Visit Shodoshima and hike 2hrs in the breathtaking Kankakei Gorge or visit the Japan's oldest area for Soy Sauce production more than 400 years of crafting.



See Page 15 for Departures & Fares



## ITINERARY: 14 NIGHTS > TOKYO TO FUKUOKA

### DAY 1: DEPART TOKYO

Board from Tokyo Bay at 4:00pm for a 7:00pm departure. Settle into your cabin and relax as we set sail.

### DAY 2- 14:

*These are expedition itineraries covering remote regions. Your Captain and Expedition Team may make changes to the daily schedule when necessary to maximise guest experience. Below are the highlight destinations of your voyage.*

#### SHIMIZU

Shimizu is one of Japan's most scenic ports with unparalleled views of Mt. Fuji. Visit the famous tea plantations, explore the historic township with a bustling seafood market and museum, discover the photogenic miho-no-matsubara pine grove and take to a hiking trail to enjoy rustic ropeways.

#### SHINGU

Shingu is home to the sacred Kamikura Shrine. The area also hosts a stunning part of the Kumano River, Dorokyo Gorge, and pilgrimage routes to the UNESCO World Heritage Site of Kii Mountain Range. Climb the 538 steps to the shine to see gotobiki iwa (the holy rock) and picturesque scenery from this elevated viewpoint. Explore the city to connect with the food, culture and history of the area and set off on the daimonzaka trail - a cobblestone staircase from the valley up to the temples.

#### KOBE TO OSAKA / KYOTO

Today, you may choose to explore Osaka or Kyoto for the day. At bustling Osaka visit Osaka Castle, join a guided tour of famous Dotonburi Street, stroll through Kuromon Market and take it all in from the observation deck in Umeda Sky Building. At Kyoto city, once the capital of Japan, learn of the rich history of this area as we visit these places as well as local Nishiki Market, well-known for its fantastic takeaway food. Time permitting, we may travel by bullet train.

#### TOKUSHIIMA

The Iya Valley is a remote, mountainous valley with dramatic steep-sided mountain slopes strung with suspension bridges constructed from mountain vines. We will take a sightseeing boat cruise through the Oboke Gorge, admire artworks and artefacts at the Otsuka Museum of Art, visit a Buddhist temple and experience an Awa Dance performance, which is celebrated annually at a festival dedicated to this dance style.

#### SHODOJIMA

One of the first islands born to the Gods in the creation myth of Japan, Shodojima literally means 'small bean island', a fitting name for an island where traditionally soybean crops were processed into soy sauce. Learn about this time-honoured condiment with a 400-year-old history at the Marukin Soy Sauce Historical Museum. Experience the making of the Japanese famous Somen noodle and try your hand at dividing the noodles with long chopsticks. Visit Misaki no Bunyojyo, the elementary school featured in the famous film Twenty Four Eyes.

#### MIYAJIMA

The famed Itsukujima shrine is one of Japan's most recognisable symbols - a UNESCO World Heritage Site and National Treasure. Other important sites are Daisho-in, a temple of Shingon Buddhism and Reikado Hall, located on Mt Misen, the highest peak on Miyajima. Walking paths link cultural sites and Maple Valley, providing the ideal pace with which to absorb centuries-old customs. Stroll amongst the deer that wander the same sites.

#### HIROSHIMA

Forever linked to the WWII tragedy, Hiroshima has since been rebuilt while retaining historical heritage, with Peace Memorial Park the prominent feature. Shukkeien Garden's valleys, mountains

and forests are represented in miniature with tea houses amongst the gardens an ideal spot to enjoy the surrounds.

#### MATSUYAMA

High on Mount Katsuyama, Matsuyama Castle is one of Japan's twelve original castles and stands at the heart of the city of Matsuyama. Pilgrims dressed all in white are a frequent site at Ishitji Temple, where an inner temple connects to the main temple grounds via a dimly cave and 200m long tunnel that houses Buddhist statues, carvings and drawings.

#### KARATSU

This trading hub is known for its safe harbour and close proximity to other foreign trading ports. Here we will explore the island's many idyllic surrounds including the Nanatsugama limestone caves, the bustling city area and markets, climbing to historic Karatsu Castle and one of Japan's top waterfalls, Mikaeri Falls.

#### TSUSHIMA

Tsushima was once a single island before a canal divided the island in two in the 1600's, then into three islands in the 1900's. Though in reality there are approx. 100 islands that collectively make up Tsushima with its abundance of natural beauty and untouched forests. Birdwatching is a popular pastime, particularly within the Tsushima Wildlife Conservation Centre, home to the Tsushima Leopard Cat, an endangered species.

#### JEJU (SOUTH KOREA)

Jeju Island's Manjanggul lava tubes are regarded as the finest lava tube system of caves anywhere in the world and are recognised by UNESCO as a Global Geopark site. The Jeonbang Falls is Korea's only waterfall that tumbles directly into the sea, while Seongsan Ilchulbong Peak is a flat-topped crater that rose from the sea many years ago.

#### SASEBO

The Maritime Self-Defence Force Sasebo Museum displays historical naval vessels alongside the Former Sasebo Navy Club which dates back to the late 1800's. The historical pottery town of Arita is where Japan's fine porcelain was first produced around 400 years ago. Arita-yaki pottery is now the most highly regarded pottery across all Japan with its 'secret ingredient'. We try our hand at pottery making with an opportunity to make our very own Arita ceramics.

#### AOKATA AND NAKADORI ISLANDS, GOTO ISLANDS

The Goto Islands are best known for Christianity, while religion was banned, the 'hidden Christians' settled here and continued practicing their faith in secret until the ban was lifted in the 1870s. With around 50 churches dotted across the prefecture, such as the UNESCO World Heritage-listed Kashiragajima Church with its stone construction, other interesting sites we will visit include the Whale Museum and the Stone Monuments of Wakamatsu Island.

#### FUKUE ISLAND

Also a member of the Goto Islands, Fukue Island is the largest of the group with hilly terrain, temples and churches. Be welcomed into port with wind instruments and a traditional drum performance. Hike Mt. Onidake, the dormant volcano, learn of the area's history on a visit to the city museum, cruise Abunze coast to view the lava rock formations and soak in the natural beauty of the island with its beaches, mountains and craggy coastline.

### DAY 15: ARRIVE FUKUOKA

Our voyage ends in the Japanese port of Fukuoka. Disembark *Coral Geographer* at 8:30 am and bid farewell to new-found friends, the Master and crew.

# THROUGH JAPAN'S RYUKYU ISLANDS

FUKUOKA > KEELUNG

16 NIGHTS | 7 OCTOBER 2023 & 5 OCTOBER 2024

①

## Expedition Highlights

- > Be among the few overseas tourists to set foot on the remote Ryukyu Islands and learn about the culture and tradition of these coastal communities.
- > Walk through UNESCO listed thousand-year-old cedar forests and view a 25m tall giant cedar tree estimated to be up to 7,200 years old.
- > At Naha Island, Okinawa, try your hand at glassmaking in the traditional Ryukyu style and witness the 600-year-old practice of Hanhau textile weaving.
- > Swim, snorkel, kayak and dive to explore Japan's diverse underwater ecosystems including at the pristine Kerama Island Group.
- > Learn of Ryukyu culture and history and hear songs played on the traditional Sanshin instrument.

See Page 15 for Departures & Fares

②



③



④





## ITINERARY: 16 NIGHTS > FUKUOKA TO KEELUNG

### DAY 1: DEPART FUKUOKA

Board at the harbour city of Fukuoka at 4:00pm. Settle into your cabin before Captain's welcome drinks as the sun sets.

### DAY 2 - 16:

*These are expedition itineraries covering remote regions. Your Captain and Expedition Team may make changes to the daily schedule when necessary to maximise guest experience. Below are the highlight destinations of your voyage.*

#### NAGASASKI

Once home to a major imperial Japanese base during the first Sino-Japanese War and Russo-Japanese War as well as being the second city to be hit by an atomic bomb, has a colourful history. Visit the peace memorial and the many shrines and temples throughout. Take note of the mix of old and new architecture with influences from the US, Dutch to Chinese.

#### SHIMOKOSHIKIJIMA

Shimokoshikijima is a top geological site with large scenic cliffs along with dinosaur fossils at sites located across the island. Here we have the opportunity to explore the Napoleon Rock that stands an impressive 127m tall. Spend time at the Satsumasendai Fossil Exhibition, see the famous three-tiered waterfall, explore dinosaur fossil sites and hear songs played on the traditional instrument called a Gottan.

#### KAGOJIMA

Kagojima is the easternmost and second largest of the Sumi Islands belonging to Kagojima Prefecture. Flagged as an Important Bird Area, the island is home to Japanese wood pigeons and Ryukyu robins. Beach hop on the west coast to find pristine white sands and sea turtles, with the opportunity to swim in the clear waters. Explore the network of wide caves at low tide and the fascinating daily operations of the space centre.

#### YAKUSHIMA

Walk through UNESCO-listed thousand-year-old cedar forests and view a 25-metre-tall giant cedar tree estimated to be up to 7,200 years old at Yakusugi Land. With a number of walking trails on the island, we may also visit some of the many waterfalls. The Yakusugi Museum displays the ecology, history and industry of the forests on the island. Learn about the Yakujima cedar trees, the products that come from them and how they were harvested.

#### SUWANOSEJIMA

Suwanosejima is one of the Tokara Islands and is home to a population of less than 100 people who make their living from agriculture, fishing and seasonal tourism. The volcano on this island is one of the most active in the world, in a state of near-continuous strombolian-style eruption since 1949. Cruise around the island to view this unique, remote destination.

#### AMAMI OSHIMA

Amami Oshima is home to rare endemic wildlife including the prefectural Lidth's Jay bird recognisable by its blue and red plumage and the Amami black rabbit - one of the most primitive species of rabbit alive. Enjoy time on the picturesque tropical beaches by swimming, kayaking and diving. Explore Kuroshio Forest by kayak and learn of the island's history at Amani Park.

#### OKINOERABUJIMA

The 'island of flowers and limestone caves' is a beautiful and peaceful island. Over 300 limestone caves can be found here, where you can discover the natural beauty and mysteries which have spawned many of the legends surrounding these natural treasures. Venture into Shoryudo Cave and be surrounded by twinkling stalactites and stalagmites. Spot abundant marine life alongside numerous species of coral while swimming, snorkelling and diving in the island's pristine waters.

#### YORONJIMA

Yoronjima is the northernmost island in Japan where the Southern Cross constellation can be seen. Part of the Amami Gunto National Park, Yoronjima is famed for its pellucid waters for diving, swimming, snorkelling and kayaking.

#### NAHA, OKINAWA

Naha is one of the 160 islands comprising the Okinawa group. Encounter Okinawa's culture that sets it apart from the other Japanese prefectures, including the local sake: Awamori. Try your hand at a traditional Ryukyu Glass workshop, experiencing the 600-year-old practice of Hanhau textile weaving and visiting one of the oldest distilleries in Okinawa.

#### ZAMAMI ISLAND, KERAMA ISLAND GROUP

Zamami is home to the nationally protected species of Kerama deer, recognisable by their large eyes and white heart-shaped pattern below their tail. The water clarity here is world-class and the colour of the ocean even has its own namesake: 'Kerama blue'. The underwater scenery lures scuba divers and snorkellers from around the world. Visit the observatories on Zamami Island and enjoy magnificent views. Swim, snorkel, scuba dive and kayak from the pristine beaches that receive few visitors.

#### KUMEJIMA

Part of the Okinawa Shoto Island group, Kumejima is known for its numerous unique rock formations and quiet unspoilt natural coastline. The island was once used to produce large amounts of rice due to its abundance of freshwater. Here, we will enjoy water activities in the warm waters and cruise the rocky coastline.

#### MIYAKOJIMA

Composed of limestone, this triangular island is one of three islands connected by bridges. Known to be home to come of Japan's best beaches, it is a great spot for water activities with its unique limestone caves, canyons and rock formations. It is possible to swim through tunnels, short passageways and even into a pitch-black dome. Observe the 1600 species of flora on the island on a stroll through the Botanical Garden and walking trails.

#### ISHIGAKI

Ishigaki, known as 'the country of poets, the island of songs and the land of dance,' an entertainment culture unique to Okinawa. View majestic manta rays, as Ishigaki is also home to the highest encounters of these ocean giants. Ranked the number one diving destination in Japan for 16 years with high visibility and vibrant coral and marine life, enjoy diving and snorkelling here.

#### IRIOMOTE

On Iriomote Island, the second largest island in Okinawa, kayak through the mangroves and soak in views of the largely undeveloped island covered in dense jungle.

#### YONAGUNI ISLAND

Discover the submerged stone structures of what's thought to be an ancient underwater city sunk by an earthquake approximately 2,000 years ago. Whale and hammerhead sharks are commonly spotted here. Cruise the coastline to view unique rock formations and learn of the island's history, culture and language. Climb to the Tindabana outlook where you can gaze at panoramic views of Sonai Village or walk to the monument that marks the westernmost point of Japan.

### DAY 17: ARRIVE KEELUNG

Disembark *Coral Geographer* at 9:30 am and bid farewell to new-found friends, the Master and crew.

# ISLAND TRAILS OF THE PHILIPPINES

KEELUNG > MANILA

16 NIGHTS | 24 OCTOBER 2023 & 22 OCTOBER 2024



1

## Expedition Highlights

- > Dive, snorkel and swim in pristine marine environments such as Cuatro Islas
- > Visit the township of Maripipi to taste local delicacies, watch wild vine weaving and experience traditional pottery making
- > Explore the historic Cabo Engaño lighthouse and learn of its significance
- > Cruise the Loboc River on a leisurely river cruise with traditional song and dance entertainment
- > Visit the Tarsiers Conservatory to see the world's smallest primate which are little bigger than a mango and are considered a near-threatened species
- > Be immersed in island village life on strolls through traditional markets, tasting local delicacies and witnessing cultural practices



2



3

See Page 15 for Departures & Fares



## ITINERARY: 16 NIGHTS > KEELUNG TO MANILA

### DAY 1: KEELUNG, TAIWAN

Board *Coral Geographer* at 4:00 pm at Keelung, Taiwan. Settle into your stateroom and relax as we set sail across the Pacific Ocean. Join the Captain's welcome drinks and meet your crew and fellow guests as the sun sets.

### DAY 2 - 17:

*These are expedition itineraries covering remote regions. Your Captain and Expedition Team may make changes to the daily schedule when necessary to maximise guest experience. Below are the highlight destinations of your voyage.*

### HUALIEN, TAIWAN

The central Pine Garden is a cultural centre set inside a former Japanese military office. The Hualien County Stone Sculpture Museum displays contemporary and traditional stone carvings. Tzu Chi Cultural Park is a tranquil green space, with statues and a meditation hall. On the Pacific Ocean coast, sprawling Nanbin Park features a popular night market. Explore the myriad of walking trails and suspension bridges that wind through towering marble valleys and thundering waterfalls of Taroko Gorge National Park.

### CLAVERIA, PHILIPPINES

Claveria is known as 'Paradise of the North'. On our visit here, cross the hanging bridge at Barangay Nagsabaran and taste local food. Explore the rich biodiversity of the land, experience local catch fishing and learn about how difference species of fish are hatched at the Bureau of Fishery and Aquatic Resources. See one of the heritage houses, the grotto of the Lady of Lourdes and a 948 church bell at the Sta Maria Eco Park.

### CALAYAN ISLAND, PHILIPPINES

Belonging to the Babuyan Group along the Luzon Strait, Calayan Island boasts pristine white sand beaches and great hiking terrains. Beach comb at Sibang Cove and hike to Nagudungan Hills for an spectacular view of the town, hills and cliffs.

### PALAU ISLAND, PHILIPPINES

Experience the natural beauty of Palau Island National Park where wildlife encounters, both on land and in the sea are main attractions along with historic Cabo Engano lighthouse. Explore the Punta Verde falls and trek to faro de Cabo Engano at Cape Engano to be rewarded with a breathtaking view.

### POLILLO ISLAND, PHILIPPINES

A relaxed tropical island with white sand beaches and clear waters. We will spend time snorkelling, swimming and kayaking around the small islets. Beachcomb and admire the rock formation resembling two chickens. Bird watching is available at close by Minasawa Island and Putting Bato has hidden caves to discover.

### CATANDUANES ISLANDS, PHILIPPINES

Enjoy water activities and leisurely beach walks at some of the Philippines famously scenic beaches with palm-fringed white sand, aquamarine sea and coral reefs populated by vibrant coral and tropical fish. At the UNESCO Geopark Reserve of Catanduanes Island explore its unique landscape with lagoons, caves and waterfalls and learn about the melding of Philippines and Spanish culture and history at the Museo de Cataduanes.

### BIRI & CAPUL ISLANDS, PHILIPPINES

Biri Island, a marine protected reserve with opportunities to explore the underwater wonderland, we also learn about Biri Island's place in WWII history. Visit the Magasang Rock formations and take a dip in the water in the middle of these rocks. Those who choose to dive have the opportunity to join the volunteer program to help remove sea pests feeding on coral. Capul Island's church, is a National Cultural Treasure as designated by the National Museum of the Philippines. Equally well known is the Capul Lighthouse. Visit these historic landmarks and take a walking tour to a natural spring once used by Spanish galleons to fetch water.

### MARIPIPI, PHILIPPINES

Known as the 'Isle of Gems' for its clear waters, friendly locals and dazzlingly bright white sand beach, Maripipi along with Sambawan and Carnaza Island offer opportunities for snorkelling, diving, kayaking as well as bird watching in the lush forests. Visit the township of Viga and experience cultural immersion such as tasting local delicacies, watching weaving of wild vines and participating in pottery making.

### TACLOBAN, PHILIPPINES

Learn more about Leyte's history at the MacArthur Landing Memorial National Park in Palo. The park honours General Douglas MacArthur and his return to the Philippines to help defeat the Japanese forces on the 20th of October 1944. On your visit here you will see the bronze statues of the heroic general and his comrades on a shallow pool. View artworks from around the world at Santo Nino Shrine & Heritage Museum, visit the Anibong shipwreck memorial and stroll through local markets.

### CUATRO ISLAS, PHILIPPINES

Meaning 'four islands' in Spanish, Cuatro Islas is a group of elusive islands, three of which being inhabited and rarely visited by locals and tourists alike. They are an idyllic location for a full day of relaxing and water activities including snorkelling, diving, kayaking and cruising around the tropical paradise by Xplorer.

### BOHOL, PHILIPPINES

Board a riverboat for a leisurely cruise along the Loboc River while enjoying a buffet-style lunch of local delicacies accompanied by local musicians. Enjoy passing by waterfront villages and watching children swinging from rope swings. Moor up against a floating platform where women and children dressed in traditional costumes perform a lively song and dance. Visit the Tarsiers Conservatory to see the world's smallest primate, and from the viewpoint lookout admire the cacao-coloured Chocolate Hills.

### BANACON ISLAND, PHILIPPINES

Kayak through the largest man-made mangrove structure in Asia. At 425-hectares this forest was a community initiative commencing in 1957 to provide food and a vital windbreak on the island as forest resources dwindled through overuse. Dive or snorkel the Danajon Reef, the only double barrier reef in the country and teeming with marine life.

### TICAO, PHILIPPINES

Wander the streets of San Jacinto village admiring the remaining 1900's ancestral houses. Visit Pabalubong Centre for local arts and crafts before cruising the nearby Manta Shoal for a chance to spot Whale Sharks as they cruise the underwater atolls. Later, enjoy onboard sunset drinks with views across San Miguel Island.

### MARINDUQUE, PHILIPPINES

Enjoy a traditional welcome by the local villagers, the Putong, before wandering the Marinduque National Museum. Learn about the skilled Marione (mask) craftsman before visiting a Kalintang (tuned percussion sticks) making village. Browse traditional handicrafts at the islands' central market.

### DAY 17: MANILA, PHILIPPINES

Disembark *Coral Geographer* at 9:00am and bid farewell to new-found friends, the Master and crew. Post cruise transfers to Manila CBD hotels or the Manila airport is included.

# WEST PAPUA, RAJA AMPAT & MICRONESIA

DARWIN TO Yap

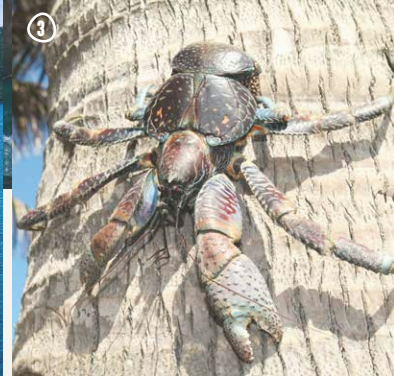
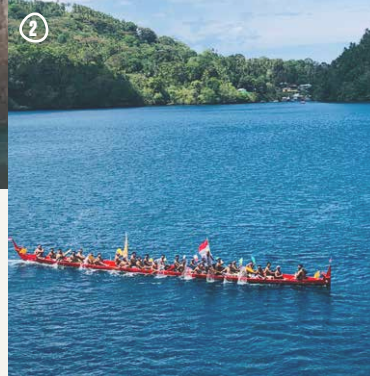
16 NIGHTS | DEPARTS 22 AUGUST 2023 & 21 AUGUST 2024



## Expedition Highlights

- Enjoy the ancient warrior tradition welcome of the kora kora canoes in Banda Neira
- At Kitikiti Waterfalls, Mommon Peninsula, cruise the pristine landscape by Xplorer in search of hidden lagoons and exotic birds such as hornbills and birds of paradise
- Discover the limestone karst islands of Raja Ampat and hike to the summit of Pindito Peak
- Snorkel and dive the coral reefs, lava flows and WWII wrecks of the Coral Triangle including Ulithi Atoll, Sonsorol, Banda Neira and the marine playground of Raja Ampat
- Join in traditional dance and singing performance and experience ancient Austronesian and Micronesian traditions passed down through history
- Learn about Yap's time-honoured customs and culture and visit the isolated islet of Ulithi home to sea turtles, coconut crabs and sea birds
- Meet the people of Sonsorol Island who are linguistically and culturally different from their Caroline Islands neighbours
- Discover the breathtaking landscape of Palau and swim with harmless golden jellyfish in Jellyfish Lake

See Page 15 for Departures & Fares



Join us on multiple voyages in the series and you will enjoy the benefits our Xplorers Club along with a further 10% adjoining cruise saving.



## ITINERARY: 16 NIGHTS > DARWIN TO YAP

### DAY 1: DEPART DARWIN

Board the Coral Adventurer at Darwin's Fort Hill Wharf at 8:00am. Settle into your cabin and relax as we set sail across the Arafura Sea. This evening, join the Captain's welcome drinks and meet your crew and fellow guests as the sun sets.

### DAYS 2-16:

*These are expedition itineraries covering remote regions. Your Captain and Expedition Team may make changes to the daily schedule when necessary to maximise guest experience. Below are the highlight destinations of your voyage.*

#### BANDA NEIRA

In The Banda archipelago is the historic heart of the spice trade and was once the world's only source of nutmeg until the mid-19th century as Portuguese, Dutch and English fought for control over the spice trade.

As we approach and enter the Zonnegat channel, witness a thrilling spectacle as Moluccan rowers in traditional kora kora canoes greet the ship and escort you into the harbour. Go ashore to be welcomed by the nutmeg dance of the local school students, before touring the historic township. Spend time snorkelling and diving over the nearby lava flow reef system and trying local foods along on the waterfront. Explore Fort Belgica, built by the first Governor-General of the Dutch East Indies (now Indonesia) in 1611. Join the locals for a traditional dance and music performance before enjoying a glass of champagne as the sun sets over the fort.

#### KITIKITI WATERFALLS, MOMMON PENINSULA

This afternoon, visit the mesmerising Kitikiti Waterfall, which flows out of the lush jungle and falls directly into the ocean. Enjoy the chance to swim under this truly memorable waterfall, feeling the chilled fresh water meeting the warm ocean water and explore the surrounding crystal clear lagoons by snorkelling or kayaking. Delve deeper into this pristine landscape by Xplorer cruise in search of hidden lagoons or on a Rainforest Walk and spot exotic birds such as hornbills and birds of paradise along the way.

#### MISOOL, RAJA AMPAT

Today, we arrive at Misool, one of the four largest islands of Raja Ampat. Here we visit Balbulul Lagoon, an almost landlocked inlet populated with conical-shaped islets undercut at sea level that rise from turquoise waters like Christmas Trees. There is time to swim and kayak amongst the islands in this beautiful lagoon, as well as exploring the island by Xplorer and beachcombing. Embarking on a hike here will lead to a higher viewpoint to experience the amazing rock island formations.

#### WAYAG, RAJA AMPAT

More Raja Ampat treasures await today as we explore the scattered karst 'beehives' of the Wayag Islands. This natural treasure is nature at its most vibrant both above and below the water, with emerald karst islands rising from the brilliant turquoise water. Explore the magnificent waterways and lagoons by Xplorer and Zodiac with time to swim in crystal clear waters and walk on white-sand beaches amongst the many islands. The coral reefs here provide exceptional diving and snorkelling, with many vibrant corals and tropical fish species to discover. After lunch, there is an opportunity for an energetic hike up to famed Pindito Peak, where you'll be rewarded with panoramic views over the island and its spectacular lagoon.

#### SORONG, RAJA AMPAT

Sorong is our departure point from the Indonesia region. Lush mountains covered with forest surround the town and fishing is a major part of the local economy. Here, we will go ashore to visit

the Sorong Nature Conservation Park to see the big old trees planted by the Dutch many years ago. We will also be welcomed by the Moi Tribe, the owners of the land, who are culturally unique from other peoples in the surrounding regions. Enjoy demonstrations such as the making of the traditional Papuan handwork bag and a tour of a dragonfruit plantation. Later, enjoy a relaxing guided walk through the forest to look for birds.

#### TOBI (HELEN REEF), PALAU

Enjoy a true expedition stop at the small island of Tob, home to around 30 people who live a traditional lifestyle. Meet the local people, who speak their own language of Tobian as well as some English, and enjoy snorkelling, swimming and beachcombing from the beach at Helen Reef. The island is known as a nesting site for lesser-crested terns and green sea turtles.

#### SONSOROL, PALAU

Isolated Sonsorol Island is one of the 16 States of Palau and is home to a population of between 25 and 65 people who are culturally and linguistically related to the Yap and Caroline Islands. Learn about their subsistence lifestyle disconnected from the modern world as we visit the village and dive and snorkel the fringing reef and coral gardens.

#### KOROR, PALAU

Koror is the main state of the Republic of Palau, as well as the main island. Koror City is home to about half of the country's population. The land mass of Koror is not large, with hundreds of islands and islets of volcanic and limestone reef construction that present a stunning vista of craggy forested islands surrounded by emerald seas.

Snorkelling and diving at Neco or Carp Island will reveal the underwater wonders to be discovered here. Later, go ashore in Koror, where there may be options to visit the Belau National Museum or Etpison Museum, which celebrates and educates about Palauan culture.

#### YAP, YAP STATE

Learn about Micronesian Yap Island's ancient monetary system of stone money, where limestone discs were quarried and carved into 'coins' known as Rai, which can be as large as 4m or as small as 4cm in diameter. There is an opportunity to visit the Yap Living History Museum to learn about Micronesian people and their time-honoured customs and culture, as well as snorkel and dive the lagoon with its coral reefs and abundant marine life.

#### ULITHI, YAP STATE

Snorkel and dive from some of Koror's palm-fringed beaches on a truly deserted islet in a remote part of the world. Enjoy the tropical vista of white sand beaches, colourful coral reefs home to sea turtles, coconut crabs and sea birds. There is also opportunity to visit the Ulithi Turtle Project and the vibrant community village.

#### SOROL ATOLL, FEDERATED STATES OF MICRONESIA

Sorol is a remote and rarely visited coral atoll, located 122 nautical miles south of Ulithi. We will be landing on the largest of the three islands accompanied by a local ranger. Here we will enjoy water activities and relaxing on an uninhabited atoll.

### DAY 17: ARRIVE YAP

Our voyage ends in the US island territory of Yap with its significant WWII sites, cultural traditions of Indigenous Chamorro people that blend with the island's Spanish colonial heritage. Disembark Coral Adventurer at 8:00 am and bid farewell to new-found friends, the Master and crew.

# THROUGH THE ISLANDS & ATOLLS OF MICRONESIA

MANILA TO KAVIENG

25 NIGHTS | DEPARTS 9 NOVEMBER 2023



①

## Expedition Highlights

- > Visit all four states of the Federated States of Micronesia including Yap, Chuuk, Pohnpei and Kosrae
- > Explore North Sibuyan Island known for its Jurassic-like sceneries and remarkable biodiversity with virgin forests, waterfalls and caves
- > Discover the seldom visited and remote Sohoton Cove with its limestone karst island hills and lakes of harmless golden jelly fish
- > Learn about the unique stone currency and construction techniques of the Yapese people
- > Explore famed archaeological site Nan Madol at Pohnpei, known as the 'Venice of the Pacific'
- > Meet the locals that call small remote atolls home and learn of their culture and way of life
- > Visit the historic location at Limasawa Island where the first crucifix was raised, hence converting the Philippines into a Catholic country
- > Snorkel and dive at almost every stop - from world famous lagoons to remote biosphere reserves



②



③



④

See Page 15 for Departures & Fares

Join us on multiple voyages in the series and you will enjoy the benefits our Xplorers Club along with a further 10% adjoining cruise saving.



## ITINERARY: 25 NIGHTS > MANILA TO KAVIENG

### DAY 1: DEPART MANILA

Board the *Coral Adventurer* in Manila at 5:00 pm for a 7:00 pm departure. Join the Captain's welcome drinks and meet your crew and fellow guests as the sun sets.

### DAYS 2-26:

*These are expedition itineraries covering remote regions. Your Captain and Expedition Team may make changes to the daily schedule when necessary to maximise guest experience. Below are the highlight destinations of your voyage.*

### APO REEF

Apo Reef, considered to be the second-largest atoll reef in the Philippines, is made up of two isolated coral reefs connected by a deep channel. This channel is one of the best dive sites in the world, with aquarium-like waters teeming with 285 species of fish. On our visit here, enjoy water activities, beachcombing and possibly a hike exploring the island.

### NORTH SIBUYAN & CRESTA DE GALLO

Today we will go ashore to explore the Jurassic-like environment of the island, and visit the Cataja and Lambingan waterfalls, deep in the lush forest. In the afternoon, arrive at beautiful Cresta de Gallo for a late afternoon snorkel in the beautiful warm water before relaxing on the beach as the sun sets for champagne and canapes.

### KALANGGAMAN ISLAND

Famous for clear blue waters, soft white sands and long stretching sandbars along both sides of the island, enjoy the relaxing surrounds of uninhabited Kalanggaman Island that stretches only 753m across. This is the perfect location to snorkel, dive and kayak on the calm waters. Venture onto the island where only a small number of huts are available for accommodation and there is a cap of 500 visitors per day to preserve the isolated unspoiled beauty of the remote location. Relax on the sand and savour a remote island experience.

### LIMASAWA ISLAND, LEYTE

Limasawa harbours a significant religious history and abounds with fascinating marine life. Here we will climb up the 450 steps to see Magellan's cross and admire the panoramic view from atop the hill.

### BUCAS GRANDE (SOHOTON COVE) & DAKO ISLAND

Here we will visit Sohoton Cove, a diverse natural landscape with valleys, hilltops, soft-sandy beaches, lush forests and mountains. This location is best explored by pump boat, which will allow you to discover limestone pool caves within the cove and the forest that envelops it. Float through famed Blue Lagoon which is an intricate channel of limestone atolls. Swim with harmless jellyfish in Jelly Fish Lake and snorkel or dive at a quintessential tropical island beach destination at Dako Island.

### KOROR, PALAU

Koror is the main state and island of the Republic of Palau. Hike to Jellyfish lake for an unforgettable swim with harmless golden jellyfish, which migrate horizontally across the lake each day. Snorkelling and diving at Neco or Carp Island will reveal the underwater wonders to be discovered here and a visit to the Belau National Museum or Etpison Museum with uncover fascinating historical insights.

### YAP, YAP STATE

Yap state is one of the four states of the Federated States of Micronesia. The main island of Yap is famous for its stone currency - limestone discs (Rai) spanning in size from 4m to 4cm in diameter and can be seen embedded in the earth or standing in rows near villages. Be welcomed with traditional dancing, visit one of the villages to learn about their stone currency and stroll through Colonia's Yap Living Museum.

### IFALIK ATOLL, YAP STATE

One of the most traditional villages in Micronesia, Ifalik is determined to maintain a cultural integrity that we are privileged to experience. Witness traditional dances and demonstrations of skills integral to the local lifestyle such as rope making, pandanus fibre making, basket weaving and carving. Enjoy another spectacular dive or snorkel as well as bird watching.

### LAMOTREK ATOLL, YAP STATE

Subject to permission of the locals, visit the villages of Lamotrek Atoll where the residents are known for their navigation skills and construction of elegant long canoes constructed from breadfruit wood. Here, we may see demonstrations of weaving and the creation of traditional foods, as well as exploring the beaches and snorkelling over the fringing reef.

### PULOWAT ISLAND, CHUUK STATE

At Puluwat Atoll, we may visit an abandoned lighthouse or see WWII wreckage at Alei Island. Continuing to Chuuk, the main atoll of Chuuk State, we explore the spectacular coral-fringed lagoon, which shelters the mountainous volcanic islands. The sweeping views of lush rainforest and cascading waterfalls contrast with deserted beaches, small, thatched villages and tiny islets swarming with bird life.

### TRUK, CHUUK STATE

This spectacular and vast coral fringed lagoon shelters 15 high reaching volcanic islands. The dramatic scenery ranges from lush rainforests and waterfalls to deserted beaches and small villages laced in World War II history. Divers can explore the eerie underwater 'ghost fleet' and birders can search the islets for plentiful seabirds. Enjoy a nature walk and visit historical sites.

### ANT ATOLL, POHNPEI STATE

We may have the opportunity to go ashore at Ant Atoll, a stunning coral reef atoll that is recognised as a World Biosphere Reserve. Home to some of the largest colonies of terns, boobies, black noddies and frigatebirds in the Pacific, the lagoon also has a thriving population of grey reef sharks.

### KOLONIA, POHNPEI STATE (NAN MADOL)

Visit the archaeological site of Nan Madol, a stone city with many ocean-filled canals and channels. Known as the 'Venice of the Pacific', the ancient city was a royal civilisation in the 12th century. Tour the site and have the opportunity to explore with nature walks to view native flora and fauna as well as waterfalls.

### KOSRAE ISLAND, FEDERATED STATES OF MICRONESIA

The mountainous island of Kosrae is known as the 'island of the sleeping lady' and is the easternmost state in the Federated States of Micronesia. Explore the enigmatic Lelu Ruins site, once an impressive city covering 20 hectares with an extensive canal system, social structure and pyramidal tombs. In the afternoon, enjoy snorkelling and diving, explore the island by bushwalking and hiking, visit the Giant Clam Farm or spend time conversing with the local people including a traditional performance.

### KAPINGAMARANGI, POHNPEI STATE

Kapingamarangi is the most southerly point of Micronesia and a Polynesian outlier, located some 740km from the main island, the state of Pohnpei. Here we will visit the charming village where islanders are well-known for their wooden carvings. There is an opportunity to purchase handmade souvenirs and snorkel in the pristine azure waters on our visit.

### AT SEA

Relax on deck with onboard presentations from our Guest Lecturers, workshops, and demonstrations. This voyage includes eight full sea days and five half sea days.

### DAY 26: ARRIVE KAVIENG

Arrive in Kavieng at 8:00am to disembark *Coral Adventurer* at 9:00am. Those who are booked on the charter flight will also enjoy a post-cruise tour of Kavieng upon disembarkation.

# 2023 DEPARTURES & FARES

## JOURNEY TO JAPAN

[VISIT >](#)

14 Nights - 8 September - Departs Yap

### Coral Adventurer

	Bridge Deck Balcony Suite	Bridge Deck Stateroom	Explorer Deck	Promenade Deck	Coral Deck
Twin Share	26,750	20,900	19,050	14,250	11,900
Sole Use	n/a	n/a	28,575	21,375	17,850

## THROUGH THE HEART OF JAPAN

[VISIT >](#)

14 Nights - 23 September - Departs Tokyo

### Coral Adventurer

	Bridge Deck Balcony Suite	Bridge Deck Stateroom	Explorer Deck	Promenade Deck	Coral Deck
Twin Share	26,750	20,900	20,990	16,990	13,290
Sole Use	n/a	n/a	31,485	25,485	19,935

## THROUGH JAPAN'S RYUKYU ISLANDS

[VISIT >](#)

16 Nights - 7 October - Departs Fukuoka

### Coral Adventurer

	Bridge Deck Balcony Suite	Bridge Deck Stateroom	Explorer Deck	Promenade Deck	Coral Deck
Twin Share	30,600	23,800	21,750	16,300	13,600
Sole Use	n/a	n/a	32,625	24,450	20,400

## ISLAND TRAILS OF THE PHILIPPINES

[VISIT >](#)

16 Nights - 24 October - Departs Keelung

### Coral Adventurer

	Bridge Deck Balcony Suite	Bridge Deck Stateroom	Explorer Deck	Promenade Deck	Coral Deck
Twin Share	30,600	23,800	21,750	16,300	13,600
Sole Use	n/a	n/a	32,625	24,450	20,400

### Adjoining Voyages

## WEST PAPUA, RAJA AMPAT & MICRONESIA

[VISIT >](#)

16 Nights - 22 August - Departs Darwin

### Coral Adventurer

	Bridge Deck Balcony Suite	Bridge Deck Stateroom	Explorer Deck	Promenade Deck	Coral Deck
Twin Share	30,600	23,800	21,750	16,300	13,600
Sole Use	n/a	n/a	32,625	24,450	20,400

## THROUGH THE ISLANDS & ATOLLS OF INDONESIA

[VISIT >](#)

25 Nights - 9 November - Departs Manila

### Coral Adventurer

	Bridge Deck Balcony Suite	Bridge Deck Stateroom	Explorer Deck	Promenade Deck	Coral Deck
Twin Share	47,800	37,150	34,000	25,500	21,250
Sole Use	n/a	n/a	51,000	38,250	31,875

# 2024 DEPARTURES & FARES

## JOURNEY TO JAPAN

[VISIT >](#)

14 Nights - 6 September - Departs Yap

### Coral Geographer

	Bridge Deck Balcony Suite	Explorer Deck	Promenade Deck	Coral Deck
Twin Share	27,990	19,950	14,960	12,590
Sole Use	n/a	29,925*	22,440*	18,885*

## THROUGH THE HEART OF JAPAN

[VISIT >](#)

14 Nights - 21 September - Departs Tokyo

### Coral Geographer

	Bridge Deck Balcony Suite	Explorer Deck	Promenade Deck	Coral Deck
Twin Share	33,760	25,120	18,860	15,720
Sole Use	n/a	37,680*	28,290*	23,580*

## THROUGH JAPAN'S RYUKYU ISLANDS

[VISIT >](#)

16 Nights - 5 October - Departs Fukuoka

### Coral Geographer

	Bridge Deck Balcony Suite	Explorer Deck	Promenade Deck	Coral Deck
Twin Share	30,820	22,840	17,140	14,280
Sole Use	n/a	34,260*	25,710*	21,420*

## ISLAND TRAILS OF THE PHILIPPINES

[VISIT >](#)

16 Nights - 22 October - Departs Keelung

### Coral Geographer

	Bridge Deck Balcony Suite	Explorer Deck	Promenade Deck	Coral Deck
Twin Share	31,680	23,490	17,620	14,690
Sole Use	n/a	35,235*	26,430*	22,035*

### Adjoining Voyages

## WEST PAPUA, RAJA AMPAT & MICRONESIA

[VISIT >](#)

16 Nights - 21 August - Departs Darwin

### Coral Geographer

	Bridge Deck Balcony Suite	Explorer Deck	Promenade Deck	Coral Deck
Twin Share	33,080	23,480	17,620	14,680
Sole Use	n/a	35,220*	26,430*	22,020*

[VIEW AVAILABILITY & BOOK ONLINE >](#)

Prices are per person and listed in Australian Dollars (AUD). Refer to website pricing at time of booking as pricing may be subject to change. \*Limited sole use occupancy available.



## The Expedition Experience

We explore remote locations that are hard to reach or not often touched by tourists, with shore excursions providing environmental and cultural appreciation. Our small group sizes ensure your experience is personal, with minimal impact on the communities and environments we visit.

Enjoy excursions or activities each day, guided by expert Expedition Leaders and Lecturers who provide commentary on culture, history, and the region's unique geology, plants and wildlife to help you connect with these special places.

## Australian Hospitality at Sea

On board our Australian-flagged expedition ships, discover a personalised, relaxed style of cruising. With a maximum of 120 guests, there is no need for queues or assigned seating. Instead, an intimate, convivial atmosphere shared with like-minded travellers makes you feel at home.

Our Australian and New Zealand crew share their passion for our destinations and the explorer's life. Join our engine room tours, watch our chefs at work in the open galley, and chat with our Captain or officers on the bridge - they will be delighted to have your company.

Our chefs, inspired by destination flavours, prepare cuisine from fresh regional produce. Our wine cellars hold a curated selection of wines and unique beers from Australia and New Zealand.

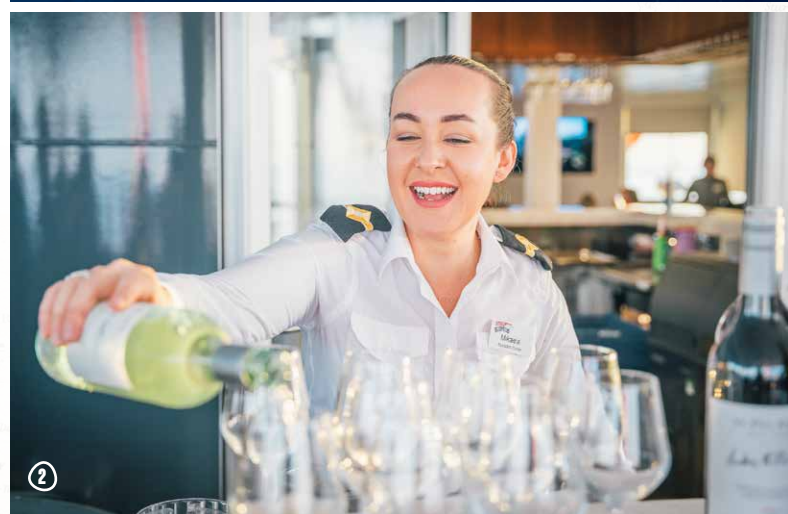
Our guests love to mingle over drinks as the sun sets, enjoy daily educational presentations by our lecturers, participate in stargazing sessions after dark, or simply find a quiet corner on deck and enjoy the solitude.

## Why Choose Coral Expeditions

There are many reasons why our guests return to Coral Expeditions. Ours is a true and authentic expedition experience.

Our fleet of three specialised expedition ships and tenders take guests to some of the most beautiful, yet undiscovered islands and coastal regions of the world. Our explorer guests are attracted by our relaxed small ship atmosphere and itineraries that larger ships cannot replicate.

At a time when the cruise industry is moving to larger and less personal ships with more gimmicks, we have purposefully limited the size of our ships to maximise the expedition experience. Our cuisine is prepared in small batches from our onboard galley using quality Australian produce and wine. We operate to high Australian standards of safety with qualified Australian crew wherever we go. We were the first to offer interpretive programs reflective of the destinations we visit and to employ Expedition Leaders, Guest Lecturers, Marine Biologists, and SCUBA Instructors - a tradition that continues today.



## Inclusions

- > Daily excursions and sightseeing
- > Snorkelling & equipment (Scuba diving at additional cost)
- > Use of Xplorer, Zodiacs and kayaks
- > Daily lectures and briefings
- > All meals, chef-prepared on board
- > Selected wines, beers, and spirits, juices, and soft drinks served with lunch and dinner service
- > Coffee and selection of teas
- > All entrance fees to National Parks and Ports
- > Tips and gratuities



# CORAL ADVENTURER

MAX 120 GUESTS

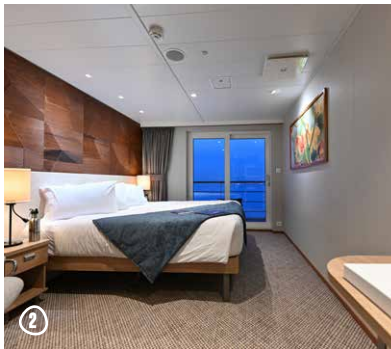
1

## Features

- 2 Xplorer tenders, 6 Zodiacs • Navigator Lounge in Bridge
- Single seat dining with wine table • Three cocktail bars
- Well-equipped gym • Passenger elevator
- Anchor-free technology

## Stateroom Categories

Bridge Deck Balcony Suites	• 55.8sqm • Private Balcony
Bridge Deck Balcony Staterooms	• 21.4sqm • Private Balcony
Explorer Deck Balcony Staterooms	• 21.4sqm • Private Balcony
Promenade Deck Staterooms	• 17sqm • Picture Window
Coral Deck Staterooms	• 17sqm • Porthole Window



2



3



# CORAL GEOGRAPHER

MAX 120 GUESTS

4

## Features

- 2 Xplorer tenders, 6 Zodiacs • Navigator Lounge in Bridge
- Single seat dining with wine table
- Three cocktail bars • Well-equipped gym
- Passenger elevator • Anchor-free technology

## Stateroom Categories

Bridge Deck Balcony Suites	• 37.5sqm • Private Balcony
Explorer Deck Balcony Staterooms	• 21.4sqm • Private Balcony
Promenade Deck Staterooms	• 17sqm • Picture Window
Coral Deck Staterooms	• 17sqm • Porthole Window



5



1



2



3



4

IMAGES 1 Yoron Folk Village | 2 Yakushima walking trails | 3 Bird Sanctuary Miyakejima-Akakokko | 4 Dance performer, Shimzu

SMALL SHIPS  
FEWER THAN  
120 GUESTS

PURPOSE BUILT  
SHIPS & UNIQUE  
TENDERS

REMOTE  
NATURE-BASED  
EXPEDITIONS

WARM  
AUSTRALIAN  
HOSPITALITY

UNRIVALLED  
LOCAL  
EXPERTISE



**coralexpeditions**  
AUSTRALIA'S PIONEERING CRUISE LINE

Last Updated: October 23, 2023 4:35 PM